

# Chess at St. Edward-Epiphany Elementary

**Championship Chess** presents a systematic, fun way to build chess skills during chess instruction and while students play. Studies show that chess improves math, reading and problem-solving and our methods connect these academic benefits to our classes. Classes include instruction as well as chess play and guided analysis.

- ❖ **Day and Time:** Friday after school from **3:00 to 4:00 pm**
- ❖ **Dates:** Winter session starts **December 4<sup>th</sup>** ending **February 19** (10 sessions, no class 12/25, 1/1 and 1/29)
- ❖ **Who can play:** Session is open to all students, both beginners and experienced, in 2<sup>nd</sup> through 6<sup>th</sup> grade or to younger students if they already know how to play. **Note:** For the class to meet, we need at least 10 players **registered by email or phone, no later than November 30<sup>th</sup>**
- ❖ **Cost:** Winter Session **\$109.00**, or **\$99.00** before November 30<sup>th</sup>
- ❖ **Registration/Payment:** Please clip and send in the registration form below with your check payable to: **Championship Chess of Greater Richmond** or pay online at [www.championshipchessRVA.net](http://www.championshipchessRVA.net) under the Register tab via paypal. We will confirm your payment and registration by email.

## Championship Chess Staff and Methods

Championship Chess Instructors utilize a complete curriculum introducing chess skills to beginners incrementally and improving players' skills and strategies in the opening, middle and endgame.

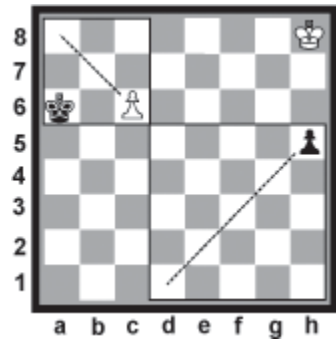
*Chess Openings:  
Two Knights Defense*



*Chess Tactics:  
White to Set a Pin*



*Endgame Strategies:  
Can White Draw?*



## UPCOMING CHESS EVENTS:

- **Bon Air Chess Club**— free, all ages. 7:00–9:00 pm, 1st & 3rd Friday every month. Prizes. 10660 Duryea Drive.
- Upcoming Chess Tourneys, <http://www.vsches.org/>

**Contact Information:** Brian Garbera, 804-921-2410; CoachBrian@ChampionshipChessRVA.net

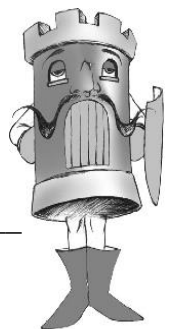
## Chess Enrollment for Winter 2015-2016 at St. Edward-Epiphany

Child's Name: \_\_\_\_\_ Gr: \_\_\_\_\_ Teacher: \_\_\_\_\_

Parent/Guardian Name: \_\_\_\_\_

Home Phone: \_\_\_\_\_ Cell #: \_\_\_\_\_ e-mail: \_\_\_\_\_

- \_\_\_\_\_ **\$109.00** for all 10 classes if paid by November 30<sup>th</sup>, or
- \_\_\_\_\_ **\$99.00** if paid by November 30<sup>th</sup>
- \_\_\_\_\_ **\$20.00** optional instructional booklet (recommended for beginners)



Pay by **check** to **Championship Chess of Greater Richmond**, write "SEES" at the bottom of the check and MAIL to: 13406 Mitford Drive, Midlothian, VA 23114, Attn: Brian Garbera **or** Pay online via paypal at [www.ChampionshipChessRVA.net](http://www.ChampionshipChessRVA.net) under the Register tab.